

SUDLEY AREA RESIDENTS' ASSOCIATION

ANNUAL REPORT

For the period ending:

31st March 2026



S.A.R.A. Hall
Rundle Road
Aigburth
Liverpool L17 0AQ



www.sudley.org.uk



Registered Charity No.
1190529

KEY INFORMATION

Charity Name

Sudley Area Residents' Association (SARA)

Registered Address

S.A.R.A. Hall, Rundle Road, Aigburth
Liverpool L17 0AQ

Legal Status

A Charitable Incorporated Organisation,
Registered Charity No. 1190529



Trustees:

- **Chairman:** Steven Kearney
- **Secretary:** Dot Caples
- **Treasurer:** Grenville Jefferies
- Jacqueline Bligh
- Brenda Brown
- Janet Corke
- Suzanne Metcalfe
- Jennifer Woodcock
- Ieuan Care (from: 5th Dec 2025)

Resignations during the year:

- Bernard Voiels
(resigned: 13th Oct 2025)
- Janette Porter
(resigned: 3rd May 2026)

SARA Register of Members

369 (+9) full members

permanent residents of the Sudley Area aged 18 years and over and these shall all have voting rights

257 (+10) non-voting members

well-wishers anywhere

1 (-) co-opted members

persons who, in the opinion of the Trustees, have special knowledge or experience to offer the Charity. Such members shall be called co-opted members and shall have the right to vote at meetings of the Charity



2025-2026

The past year has been another very busy and successful one for SARA with continued investment in our building, strong community involvement, and a growing programme of activities.

A major focus has been improving and maintaining the hall, with significant repair and refurbishment works carried out both internally and externally. These improvements, together with the ongoing efforts of our volunteers and gardening team, have helped ensure the hall remains a welcoming, attractive and well-used community space.

We were extremely grateful to receive a generous donation of £5,000 from a local resident who wished to remain anonymous. Following last year's AGM, they kindly chose to support the ongoing repair and maintenance of the building, and this contribution has been a valuable help during a year of significant investment.

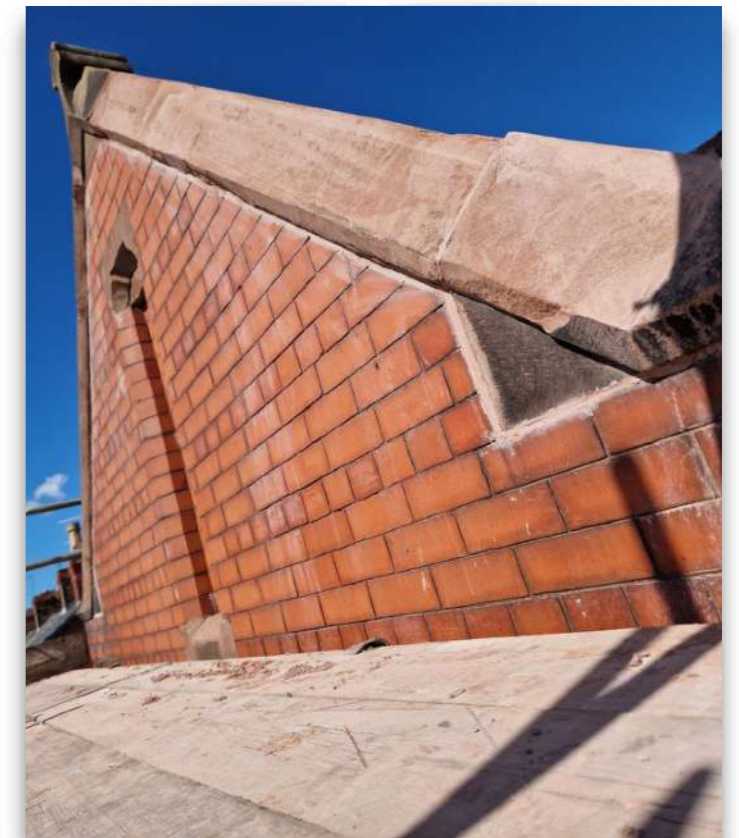
Community activity has continued to go from strength to strength, with a wide range of groups using the hall, alongside successful day trips, cinema evenings, quiz nights and other social events bringing people together throughout the year.

Despite the challenges of maintaining an old building, SARA Hall continues to thrive. Thanks to the dedication of our volunteers, the support of our users and the wider community, we remain a busy, welcoming and valued hub for local people.

FRONT ELEVATION RESTORATION WORK (TAKE 2!)

Following our reports last year regarding repairs to the sandstone at the front of the building, we regrettably had to undertake further remedial works this year using a different specialist contractor. Significant sections of the repair material applied during the previous works had deteriorated prematurely, becoming friable and detaching from the building.

As a priority, a new contractor was appointed to make the affected areas safe. The works included inspection of all apex coping stones, removal of loose and defective repair material, preparation of damaged areas, and reinstatement using a specialist masonry repair mortar matched as closely as possible to the existing stonework profiles. Associated repointing was also carried out where required. The repairs were completed using appropriate materials and techniques to ensure a durable and sympathetic restoration.







WINDOW RENEWALS

We sought specialist advice on restoring the existing windows. Unfortunately, the window above the bookcase having been damaged many years ago and boarded up for security measures was considered beyond repair. Surprisingly many visitors to the hall only noticed there was a window there once it was replaced!

The three large windows on the opposite side had also been heavily altered through the installation of fibreglass panels and metal security cages. Given their condition and the extent of the alterations, it was agreed that replacement with modern, energy-efficient windows was the most appropriate course of action.

The replacement windows are now fully operational and can easily be opened for ventilation. They also allow substantially more natural light into the room, significantly improving both its appearance and usability.



WINDOW RENEWALS



WINDOW RENEWALS



DAMP REPAIRS

Remedial works were carried out to damp-affected walls in the main hall and storage room. This included the removal of damaged plaster, installation of a damp-proof membrane, and re-plastering of the affected areas. The works were completed to prevent further moisture damage and restore the walls to a good condition.



LOCAL NEIGHBOURHOOD FUND

To improve accessibility and independent access to the building, a heavy-duty coded handle was installed on the accessible side entrance.

Funding from Liverpool City Council's Local Neighbourhood Fund, supported by former Councillor Dave Antrobus, enabled the upgrade to be completed.

Prior to the installation, session leaders and keyholders were required to use the front entrance, which includes several steps and could present difficulties for some users.

The new coded handle has provided authorised users with secure, barrier-free access through the accessible entrance, making the building more inclusive, convenient, and welcoming for volunteers, activity leaders, and community members.



Liverpool
City Council

Total Received
£234.00





The SARA Garden Project continues to go from strength to strength, adding colour and a warm welcome to the hall throughout the year.

Generously supported financially by a SARA member, the project enables the purchase of plants and materials, while a small group of trustees manage the planters, source new plants and keep the displays looking their best.

The results speak for themselves, with the blooms looking amazing and creating a beautiful entrance that everyone can enjoy. This project is a wonderful example of how community support and volunteer dedication can make such a positive difference.



GROUPS, CLASSES AND SESSIONS AT SARA HALL

We're pleased to report that our programme has continued to grow. During the period, **33 groups** used the hall for a total of **1,392 hours**—an increase of **57 hours** on last year.

Despite the regular changes that naturally occur within our programme, we have not only maintained our level of activity but increased it. While we said farewell to Pre-school Yoga, Jo Jingles, Crafty Art Club, and Funzo's Phonics, we also welcomed new sessions including Salsacise Gold and South Liverpool Physio.

It is encouraging to see the hall continuing to support a diverse range of activities and attracting strong community use throughout the year.



GROUPS, CLASSES AND SESSIONS AT SARA HALL

GROUPS FOR CHILDREN



Crafty Art Club

ARTS AND CRAFTS FOR AGES 5-9YRS
EVERY WEDNESDAY 5PM-6.15PM

A poster for 'Crafty Art Club' featuring various art supplies like paint palettes, brushes, and markers on a purple background.



FAMILY HUBS
& CHILDREN'S CENTRES
LIVERPOOL

A logo for 'Family Hubs & Children's Centres Liverpool' featuring a tree with colorful leaves, a dog, a bird, and a child peeking from behind a branch.



5+
DRAMA ADVENTURES

A poster for 'Drama Adventures' with a yellow and green chevron background, featuring a wooden signpost icon.



7+
DRAMA CREATORS

A poster for 'Drama Creators' with a yellow and orange chevron background, featuring a glowing lightbulb icon.



FUNZO'S PHONICS

A logo for 'Funzo's Phonics' featuring a green alien character above the text 'FUNZO'S PHONICS' in large, colorful, bubbly letters.



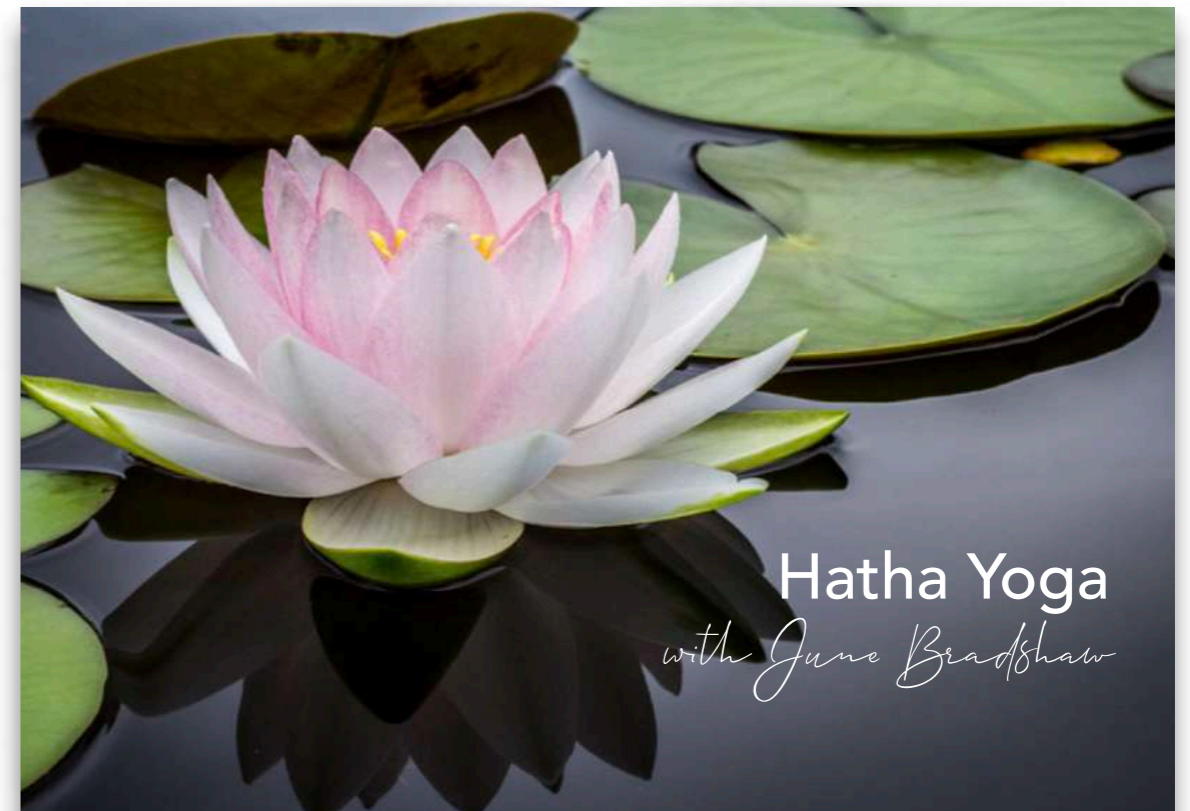
Tuesday Pre-School YOGA

Play,
Learn
and
Grow...
Together!

A poster for 'Tuesday Pre-School Yoga' with a blue border, featuring illustrations of children playing and a sun.


GROUPS, CLASSES AND SESSIONS AT SARA HALL

Yoga classes
— at —
S A R A




BEGINNERS &
YOGA
INTERMEDIATE
—
MOVE • BREATHE • GROW

Menopause Yoga™



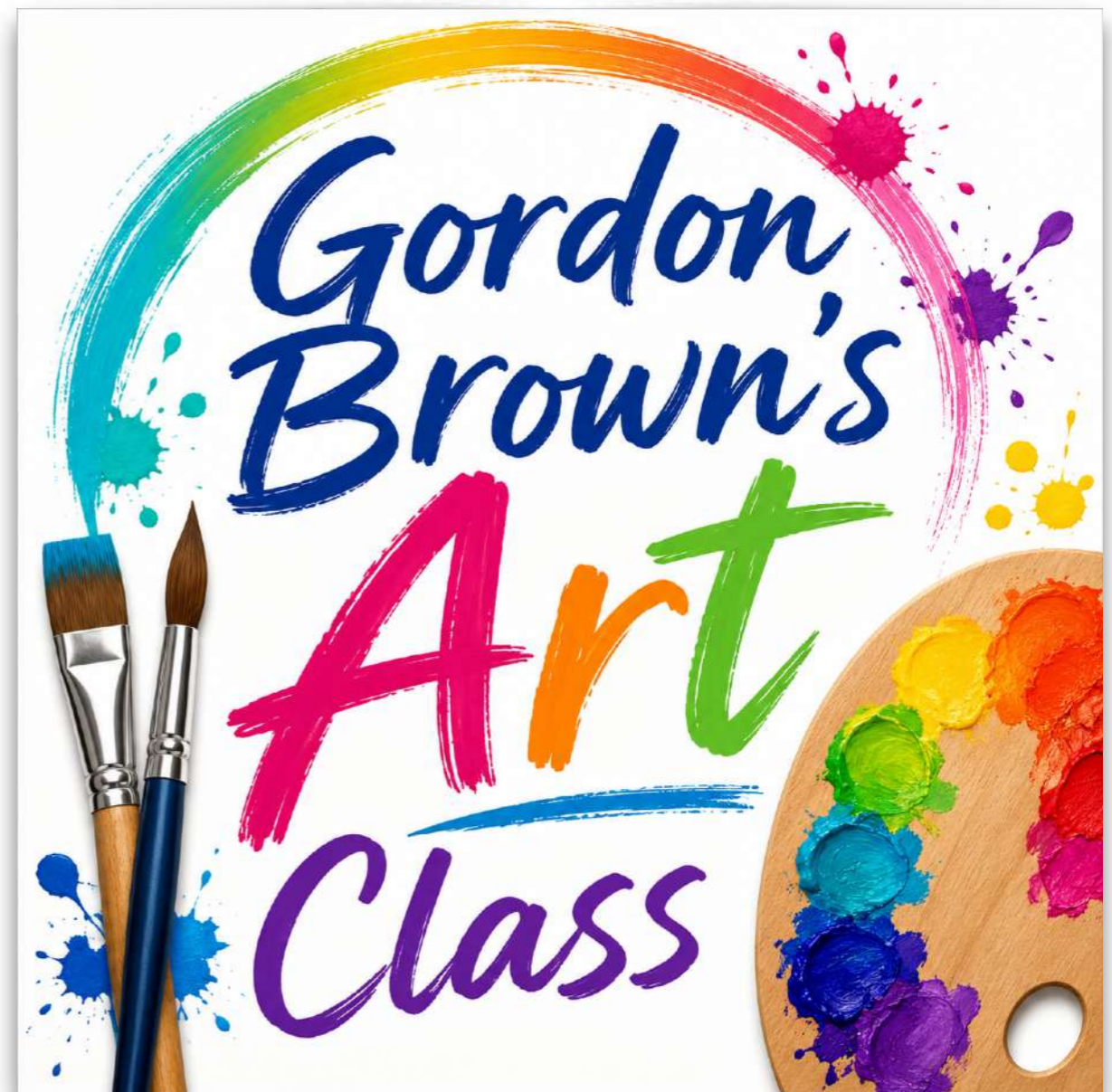
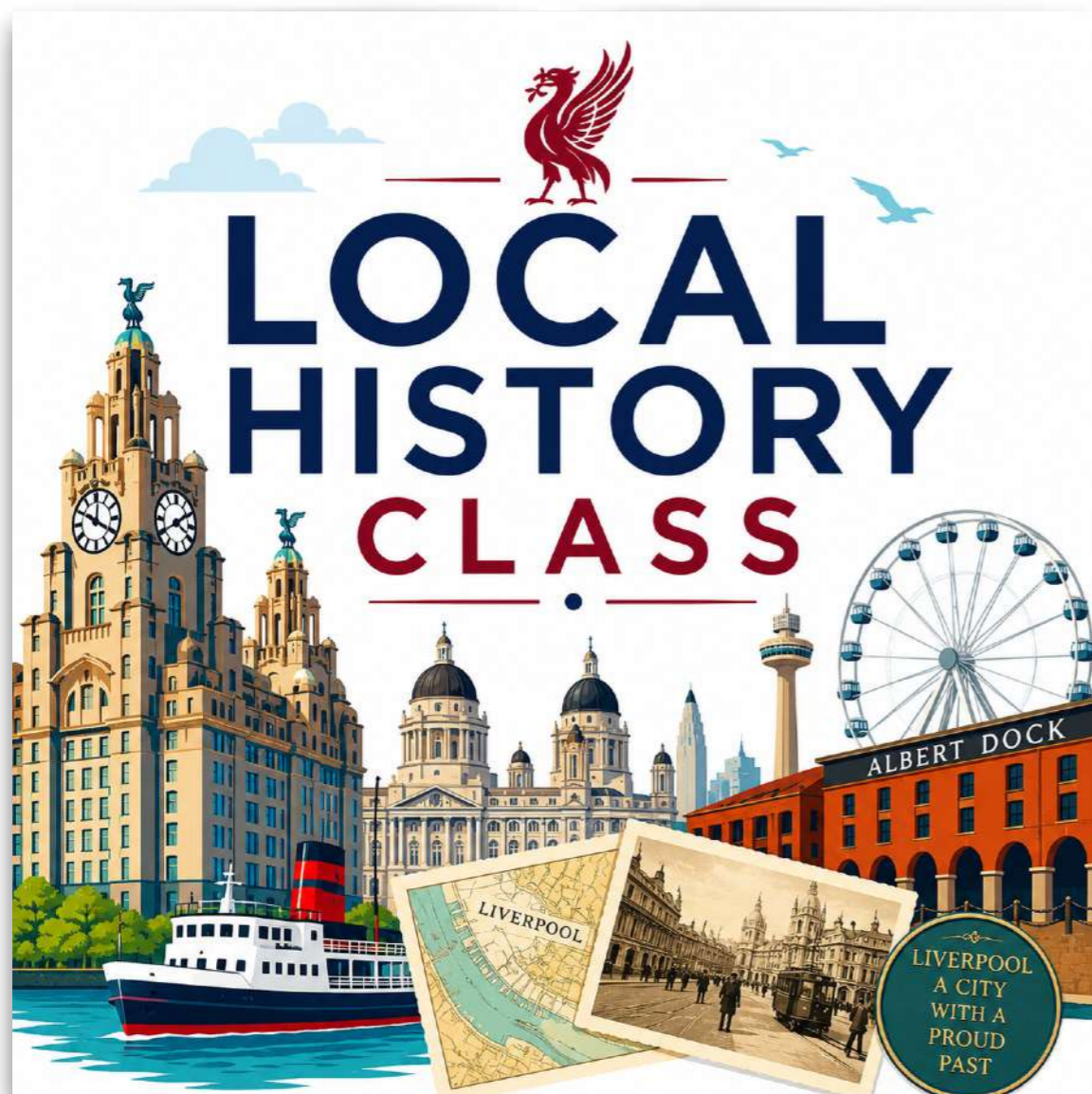
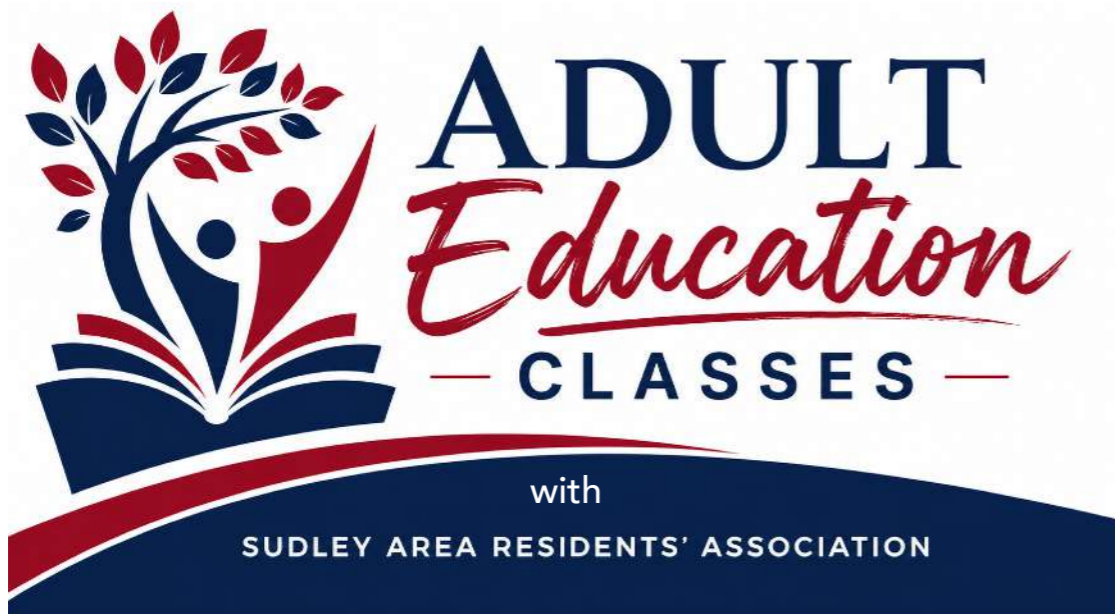
SIRAYOGA

A curated yoga practice for body and mind



Chair
YOGA

MOVE • BREATHE • THRIVE



There are currently two adult education classes at SARA

GROUPS, CLASSES AND SESSIONS AT SARA HALL

We have many other weekly, monthly and ad-hoc groups running at SARA Hall including the following:-

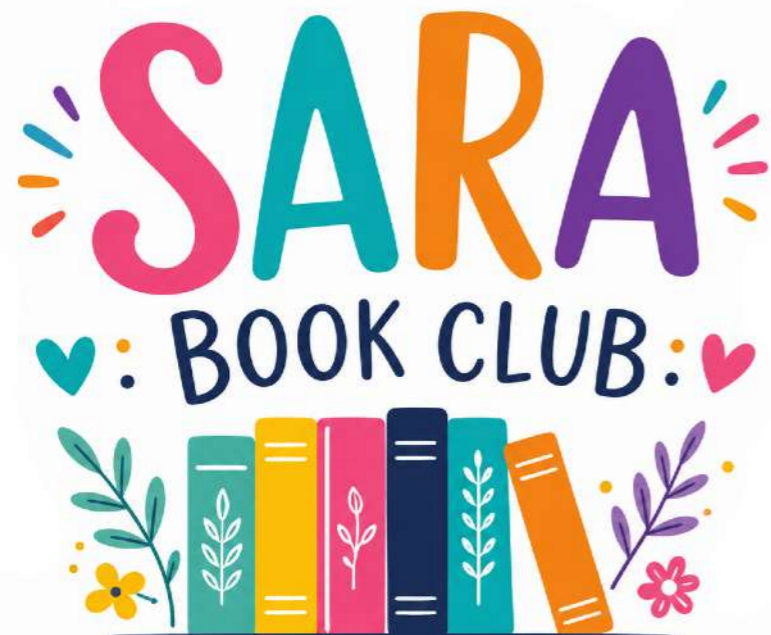


NICOLA PARKER
PILATES



GROUPS, CLASSES AND SESSIONS AT SARA HALL

Monthly/ad-hoc groups, surgeries, support groups and local area events include:



SARA book club met 11 times over the year to discuss the latest title. New members are welcome to attend.



In-person antenatal NCT courses are now running at SARA Hall



the **Oddfellows** SINCE 1810
making friends, helping people



POLLING STATION



Community Support Officers held 6 Police surgeries at SARA Hall during the year.

AIGBURTH WARD COUNCILLOR'S SURGERY
Aigburth Ward Councillors held 10 advice surgeries over the year.





A total of **396 people** took part in our popular day trips this year, visiting destinations such as Halifax (with an optional visit to Shibden Hall), Tweedmill and Conwy, Garstang Market and Lytham St Annes, Oswestry Market and Llangollen, Llandudno, York, Bury, and Boundary Outlet Colne. It has been an outstanding year, with most trips selling out on booking day. Demand was exceptionally high and at one point we had a waiting list of 18 people.



SOCIAL EVENTS

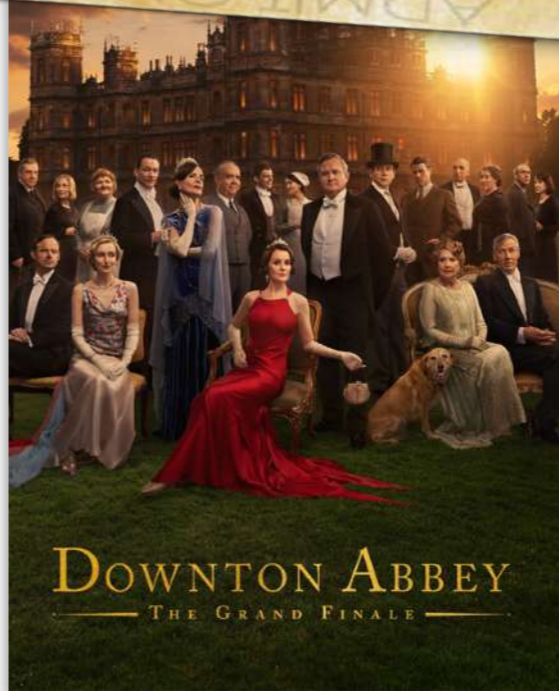
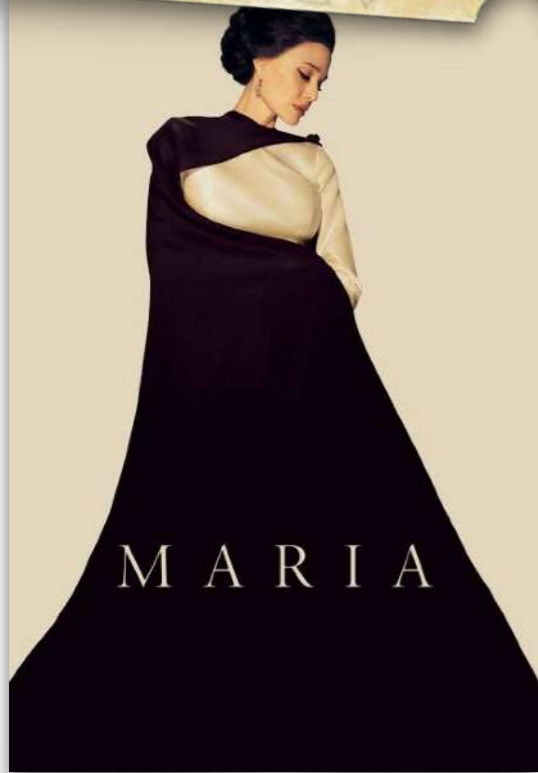
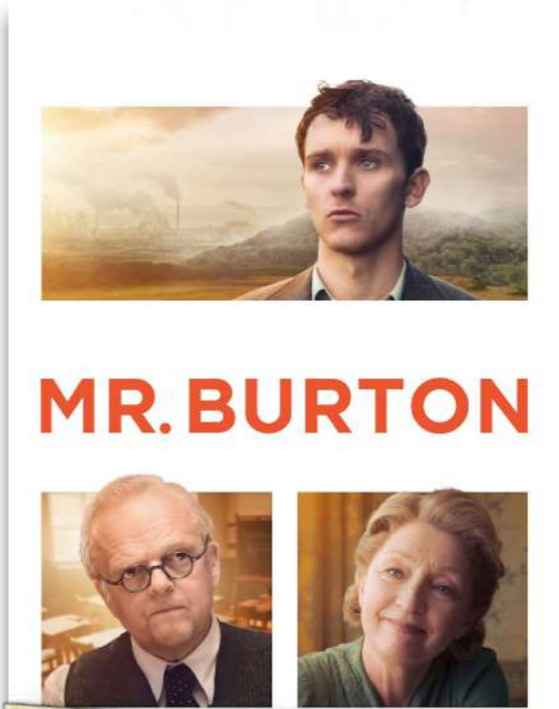
Our free community cinema evenings continue to be our most popular social events, providing not only entertainment but also a valuable opportunity for people to meet, socialise and enjoy refreshments together during the interval.

Between April 2025 and March 2026, a total of **356 people** attended nine film screenings. During the year, we replaced some of our audio equipment following the mechanical failure of our amplifier, which had provided reliable service since 2016.



We hosted two successful quiz nights in May and October 2025, with a total of **78 people** taking part. The evenings were packed with fun and varied rounds, including music, picture and logo quizzes, as well as some Liverpool-themed questions. There were plenty of prizes on offer throughout the events and even a special prize for the team finishing in last place, ensuring lots of laughter and enjoyment for everyone involved.

COMMUNITY CINEMA



FINANCIAL SUMMARY

During the year, income increased by **£4,829**, reaching **£37,915**, while expenditure rose by **£5,150** to **£32,369**. We continued to operate the hall at full capacity, as we did last year.

The increase in income was largely due to a generous donation from a local member of the community who, after attending our AGM last year, chose to support our ongoing building costs.

Expenditure was higher than the previous year, primarily because capital spending on the building rose from **£6,032** to **£12,795**. This reflected significant works, including floor restoration noted last year, replastering and tanking of large sections of the walls, and a repeat of major works on the front elevation, this time carried out by a specialist stonemason. Additionally, four new windows were installed.

Focusing solely on income and expenditure related to SARA Hall as a building, the year resulted in a loss of **£3,413.94**. However, the overall accounts show a surplus of **£5,545.87**.



FINANCIAL STATEMENTS - INCOME & EXPENDITURE ACCOUNT (PAGE 1)

<u>INCOME</u>	2025-26 (£)	2024-25 (£)
<u>Donations, legacies and grants</u>		
Charles Brotherton Trust	275.00	275.00
Local Neighbourhood Fund	234.00	1605.20
Gardening Project (Note 3)	1,600.00	500.00
Other	5,820.00	1,084.00
<u>Operating activities to further charity's objectives</u>		
Weekday classes held at SARA Hall (Note 1)	19,205.35	19,336.70
Weekend sessions held at SARA Hall (Note 1)	1,816.00	3,181.00
Defibrillator Fund (Note 3)	-	-
<u>Operating activities to generate funds</u>		
Day trips	7,348.00	5,622.00
Other fundraising activities	1,052.76	778.46
<u>Bank Interest</u>	564.17	704.01
Total Income	37,915.28	33,086.37

Accounts are produced on a receipts and payments basis

FINANCIAL STATEMENTS - INCOME & EXPENDITURE ACCOUNT (PAGE 2)

<u>EXPENDITURE</u>	2025-26 (£)	2024-25 (£)
<u>Payments for generating funds</u>		
Day trips	4,726.00	4,660.70
<u>Charitable activities</u>		
Newsletter	422.30	204.00
Fundraising costs	676.53	386.69
Defibrillator fund (Note 3)	-	-
<u>Charitable donations and grants</u>		
Local Neighbourhood Fund Expenditure	234.00	1,605.20
Gardening Project Expenditure (Note 3)	533.50	177.02
Other	184.00	506.00
<u>SARA Hall repairs, renewals and maintenance (Note 1)</u>	12,795.25	6,032.79
<u>SARA Hall running costs (Note 1)</u>	11,640.04	12,250.55
<u>SARA Administration (Note 2)</u>	1,157.79	1,396.52
Total Expenditure	32,369.41	27,219.47

Accounts are produced on a receipts and payments basis

FINANCIAL STATEMENTS - INCOME & EXPENDITURE ACCOUNT (PAGE 3)

	2025-26 (£)	2024-25 (£)
Total income	37,915.28	33,086.37
Total expenditure	32,369.41	27,219.47
Net income / (expenditure) for the year	5,545.87	5,866.90
Cash funds as at last year end	47,196.36	41,329.46
Cash funds at this year end	52,742.23	47,196.36

Accounts are produced on a receipts and payments basis

FINANCIAL STATEMENTS - BALANCE SHEET

<u>Balance Sheet as at 31st March</u>	2026 (£)	2025 (£)
Cash in hand	-	-
Current account	7,035.29	6,196.36
Reserve account	45,706.94	41,000.00
Total	52,742.23	47,196.36

RESERVES POLICY

The Trustees have determined that the charity should aim to hold a cash reserve of no less than **£30,000** so that the charity can continue should income and/or expenditure vary unexpectedly. The Trustees also agree to hold further reserves for ongoing planned projects and anticipated future maintenance.

Note 1. SARA Hall Net Income

<u>INCOME</u>		2025-26 (£)	2024-25 (£)
	Weekday Sessions	19,205.35	19,336.70
	Weekend Sessions	1,816.00	3,181.00
	Total Income	21,021.35	22,517.70
<u>EXPENDITURE</u>			
	SARA Hall repairs, renewals and maintenance	12,795.25	6,032.79
	Lighting and Heating	1,937.77	1,709.42
	Rent and Council Tax	3,042.02	2,942.02
	Water Charges	462.18	362.06
	Insurances	875.84	1,784.63
	Caretaking	4,680.00	4,770.00
	Sundries	256.84	303.70
	Telephone and Broadband	385.39	378.72
	Total Expenditure	24,435.29	18,283.34
	Net Income / (Expenditure)	3,413.94	4,234.36

Note 2. SARA Administration

<u>EXPENDITURE</u>	2025-26(£)	2024-25 (£)
Website Hosting	271.19	230.40
Email Server	189.10	133.24
Stationery	163.33	408.48
Bank Charges	25.40	60.40
Miscellaneous	396.05	-
Cloud based storage	54.72	-
Legal Fees - Lease Renewal	58.00	564.00
Total Expenditure	1,157.79	1,396.52

Note 3. Gardening Project and The Defibrillator Fund

The gardening project has been funded by a member of SARA. A number of top-up donations have been made in the year to give us a good working balance for maintaining the garden area.



	2025-26	2024-25
Gardening Project Income	1,600.00	500.00
Gardening Project Expenditure	533.50	177.02
Remaining Balance	1,389.48	322.98

The defibrillator was installed in 2022 at SARA. We have a fund which is ring-fenced exclusively for costs associated with consumables for the device. Each time the machine is used, replacement pads are required and approximately every five years, the battery will need replacing.



<u>BALANCE</u>		(£)
Defibrillator Fund (for defibrillator consumables only)		521.01
Remaining Balance		521.01



SUDLEY AREA RESIDENTS' ASSOCIATION

A charitable incorporated organisation, registered charity no. 1190529

**CERTIFICATE OF
HONORARY MEMBERSHIP**

*The Trustees of S.A.R.A. do hereby proudly
present this honorary membership to*

MRS BRENDA BROWN

*in recognition of her long service and
commitment to
Sudley Area Residents' Association*



Steven Keabrey
Chairman
26th June 2026



BECOME A SARA MEMBER!



**SUPPORT
YOUR
COMMUNITY**



**MAKE A
POSITIVE
DIFFERENCE**

**TOGETHER WE CAN
MAKE OUR AREA BETTER**



JOIN TODAY!

OUR YEAR IN NUMBERS



OUR MEMBERSHIP

 **369**
FULL MEMBERS

 **257**
NON-VOTING MEMBERS

 **1**
CO-OPTED MEMBER

MAKING A DIFFERENCE IN OUR COMMUNITY

 **33**
GROUPS

used the
community
centre over
1,392 hours

 **396**
PEOPLE

went on
8 Coach Trips

 **356**
PEOPLE

attended
9 Films
at our community
cinema

 **78**
PEOPLE

attended
**2 Quiz
Nights**

OUR FINANCES

 **INCOME**
increased by
£4,829

 **EXPENDITURE**
increased by
£5,150

 Costs specifically
related to SARA Hall
made an expected
Loss of
£3,413.94

 **OVERALL**
the organisation
made a surplus of
£5,545.87

THANK YOU TO ALL OUR MEMBERS & SUPPORTERS